

PD Series

PVC Duct Systems for Light Commercial VRF & Industrial Linesets

Functional & Professional Appearance

Light & Tough: UV & weather resistant heavy duty PVC construction resists deformation.

The PD series is designed to protect linesets from the elements, vandalism and mechanical damage while enhancing the external appearance of the entire system.

Currently available in 2 sizes, 3.5" diameter and 4.7" diameter, this series is designed primarily for use in smaller VRF systems where use of the larger metal RD series is not needed.

It can also be used in conjunction with the RD series to cover the linesets from the condenser to the point where they enter the Metal Duct system.

It is particularly effective for cladding any configuration of final connections into a condenser.

In addition, this series can be used for industrial linesets for both refrigeration and conventional Air Conditioning applications.

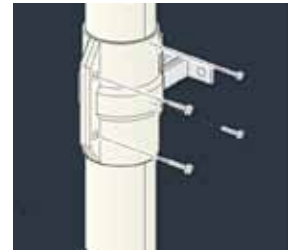
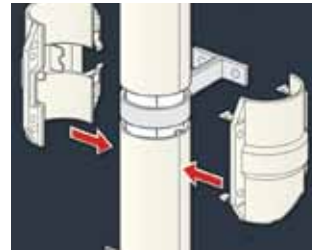
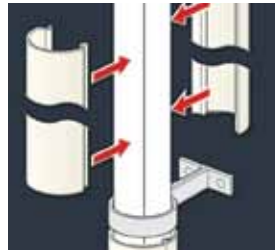
The PD Series can be fitted during the installation process or can easily be retrofitted after the linesets have been installed.

Easy Installation: All duct and fittings disassemble for ease of installation and mount with commercially available standard wall mounted pipe brackets.

Step 1: Clip duct into place over installed lineset.

Step 2: Install mounting couplers & fittings.

Step 3: Secure with provided screws.



Specifications & Technical Information

Application	Offset from vertical or horizontal surface
Temperature Range	-4°F to 140°F (surface temperature)
Material	Fire resistant & UV stable rigid PVC
Color	Ivory

Maximum Lineset Combinations

Item No.	Matching Pipe Clamp Size*1	Insulation Thickness		
		0.39" x 0.39" *2	0.39" x 0.78" *2	0.78" x 0.78"
PD-90	3.5" or less	∅0.62" x ∅1.12"	∅0.37" x ∅0.75"	-
PD-120	4.7" or less	∅0.75" x ∅1.50"	∅0.75" x ∅1.25"	∅0.37" x ∅0.75"

*1 System is designed for use with pipe clamps sized for steel pipe. Pipe clamps sized for PVC pipe can also be used provided their OD is 3.5" or less.

*2 Lineset capacity mentioned is based on Insulation thickness up to 0.75". For thicker insulation reduce Lineset capacity accordingly.